

# Empowering the modern classroom

Unlock the full potential of learning with Surface



# Classroom needs are changing

Over the last three years, technology adoption within the education space has gained incredible momentum.<sup>1</sup> New learning tools and applications are flooding the EdTech market.<sup>1</sup> Also, one-to-one programs providing a device to each student are proliferating as students' access to the internet continues to improve.

Despite the digital transformation, there are still challenges throughout the education system, including budget restrictions and privacy concerns. Online learning exposes gaps in equity and accessibility—for students who have limited access to devices, and those with different learning styles and abilities.

Going forward, educators, administrators, and IT professionals will need to leverage technology solutions to meet the challenges. Those solutions must unlock the full potential of every learner, no matter where they are or what their capabilities may be.

## Challenges in education

- Making the most of strained budgets
- Addressing gaps in equity and accessibility
- Securing and protecting online environments

**87%**

of students in high-income countries now have access to the internet at home.<sup>2</sup>

**77%**

of teachers believe technology will help them be more effective post-pandemic.<sup>3</sup>

**82%**

of admins report using video communication systems in learning.<sup>4</sup>

**80%+**

of workplace malware attacks were encountered by K-12 education.<sup>5</sup>



# Everyone feels the pinch

From administrators to IT professionals and educators, it takes multiple partners to deliver quality learning experiences. Today, all face different challenges.

## Educators

On the front lines of multiple years of disrupted learning, educators are now dealing with the gaps in learning and looking for ways to catch up. Typically, less than half of their time is spent teaching in the classroom, with the rest dedicated to peripheral work.<sup>6</sup> Prioritizing new devices for students means educators are now working with aging technology, though almost nine out of ten expect to use more technology to teach in the future.<sup>7</sup>

# 87%

of teachers worldwide expect to use more technology to teach this year.<sup>7</sup>

## Administrators and educational leaders

From facing shortages of funding and staff to shifting expectations from parents and caregivers, administrators understand the need for innovation. However, with limited budget and resources, they need to make choices that positively impact learning now and into the future.

# 71%

of principals think there's great value in digital tools, both today and in the future.<sup>9</sup>

## IT professionals supporting education

As technology adoption in schools increases, IT professionals are providing more guidance to educators in all areas of technology. More than half are involved in decisions to adopt teaching tools, leaving less time for other important tasks such as mitigating growing security risks.<sup>8</sup> They know that to keep up they'll need the help of the right partners and tools.

# 52%

of IT leaders are involved in the procurement of digital instructional materials.<sup>8</sup>

## What have we learned about modern education?

Several factors come together to cause the challenging technology landscape in education. One-to-one device programs reduce the need for sharing and improve access for students without a computer at home. However, rollouts tend to be fragmented and incomplete with budget issues, or administrative hurdles getting in the way. Inconsistent use of teaching tools within schools and among teachers creates operational challenges for IT and leaves less time to manage persistent cybersecurity threats. Furthermore, maintenance costs of devices assigned to students and staff are high.

If we treat the wide-scale adoption of online learning as the beginning of a global pilot project using classroom technology, the data gives us insight into how technology solutions should evolve to meet the demands of modern education.

A complete education solution encompasses three pillars— **inclusive learning** for all, **secure, and scalable** digital environments, and **more value to education** through the optimization of technological investments. This eBook highlights how Surface devices empower educators, administrators, and IT professionals and support these pillars to help unlock the full potential of learning.



# Unlocking the full potential of education

Technology solutions for education must take a holistic approach to keep up with the demands of modern education. To satisfy the needs of students, educators, administrators, and IT, complete solutions must offer three core capabilities.

## 1 Inclusive design

- Create a seamless experience online or in-person so every learner can reach their full potential.
- Accommodate students of all abilities.
- Support well-being and promote student engagement.
- Empower a variety of different learning styles.

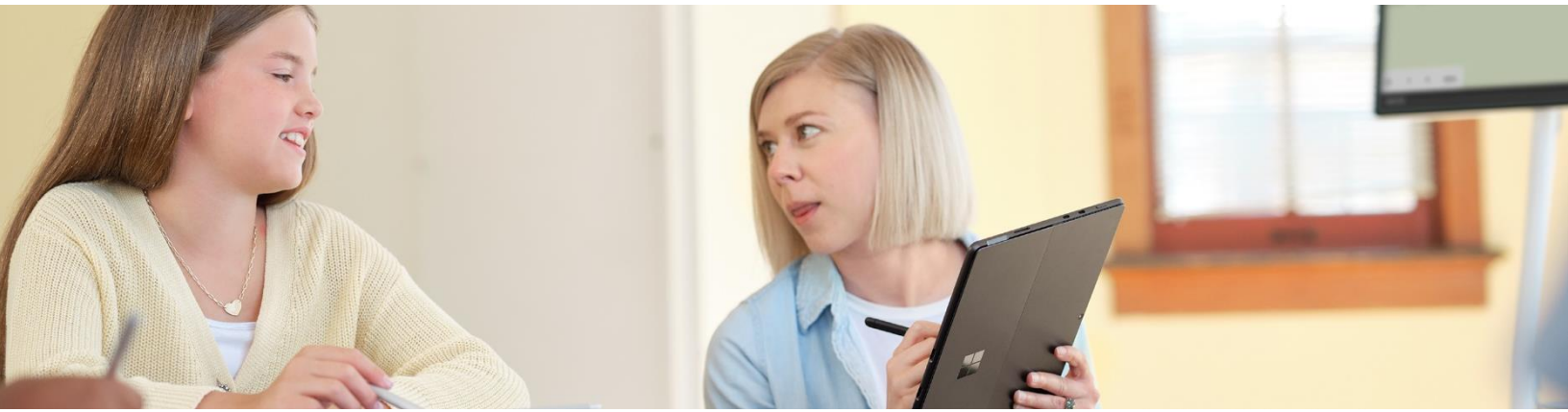
## 2 Secure and scalable IT

- Guard against threats from malware, phishing, and unsafe websites.
- Enable easy sign-on and protection from unauthorized users.
- Reduce the burden on IT teams with simple and easy deployment.
- Manage devices easily with fewer IT resources.

## 3 More value to advance learning

- Provide exceptional value with education-oriented capabilities and features.
- Reduces costs with devices dedicated for online and offline classroom experiences.
- Prepares students for the future in a tech-enabled workforce.
- Empower seamless learning experiences with familiar apps in Microsoft 365\*.





## Inclusive learning through built-in accessibility

A student's potential for learning, collaboration, and creativity can be drastically changed by the quality of tools they are provided. Surface prioritizes learning for all kinds of learners, providing hardware and software with built-in [accessibility tools](#). These tools are designed to offer more features and flexibility that allow every student to explore their full potential.

### Mobile, adaptable design

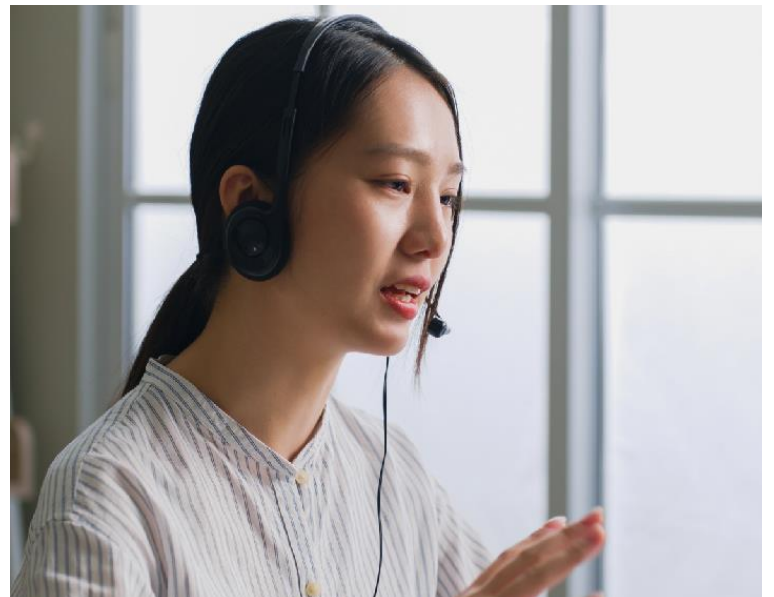
All types of learners should be able to participate in classroom discussions and activities. However, educators and students with disabilities can sometimes find these situations difficult to navigate. Surface provides students and educators with the opportunity to use their devices in ways that work best for them. In tablet mode, users can further personalize their experience with the ability to attach Surface to a wheelchair or laid flat for increased visibility. A premium audio-visual experience is also key to ensuring users feel included and represented – which is why Surface devices come with HD cameras, Omnisonic speakers, and Studio Mics to provide crystal-clear video and audio.

### Accessibility tools in Windows 11 and Microsoft 365

An inclusive approach to learning seeks to overcome difficulties by delivering better experiences for everyone. [Learning Tools](#) like Immersive Reader provide opportunities to improve comprehension, and Microsoft 365\* also includes tools like screen reading, speech-to-text, Seeing AI, Magnifier, live captions, translation, and more that help eliminate many of the barriers that would otherwise exclude some students, and challenge educators.

#### Scenario: Making audio more accessible

Tenth grade math teacher Mikaela is profoundly deaf in her left ear. One of her students is also hard of hearing. She has everyone in the class use a microphone patched to her laptop during class discussions. She and her student make use of live captions to help capture the full conversation. Other students are also setting up [live captions](#) on their devices to catch more discussion from across the room.



## Write and draw naturally

Students and teachers often need the flexibility to write or draw without the limitations of a keyboard. Surface and Windows 11 tools like Microsoft Ink combine seamlessly to enable learners to easily take notes, mark up lesson materials, and write math and science equations on ink and touch-enabled devices using a digital pen.

### Scenario: Real-time problem solving

Ellis teaches ninth grade algebra. Microsoft Ink allows him to interact with his students, in real time, while they work on their devices. Using a digital pen on his projected screen, he breaks down multiple steps to solving an equation. As students try a different equation, he can help individuals write the correct steps on their touch screen device. If the student needs to see it again, he simply clicks “replay”, and then can move on to help another student.



## Collaborative learning experiences

Surface devices come with built-in Windows 11 apps designed to prioritize collaboration in the classroom by providing an intuitive and seamless experience for both teachers and students. [Tools](#) like Microsoft Teams\*, Whiteboard, and Flip enhance collaborative learning experience and promote teamwork and knowledge sharing, helping to create a more inclusive and engaging environment.

### Scenario: Bringing students together with built-in tools

Jake has been assigned a group project with his classmates June and Sarah. Jake is a visual learner, so he uses the Surface Pen to add sketches and diagrams to Whiteboard during their brainstorm session while Sarah records their thoughts in OneNote.\* Once they've organized their thoughts, June creates a PowerPoint\* presentation where they can edit and view each other's contributions in real-time. Thanks to these Microsoft tools, the group can effectively bring their project to life.





## Simplifying deployment

IT professionals are always looking for better, more efficient ways to deploy and manage student and educator devices. With Surface, Windows Autopilot, and Microsoft Intune, IT can deploy multiple devices through a straightforward, no-touch process solution that helps enable school IT save time and money. This helps minimize the need for in-person interaction and creates a more seamless, out-of-box experience for both students and faculty.

### Remote, cloud-based management

Intune for Education\* provides tools for app policy deployment, collaboration, and storage management – all while helping to secure student data and devices. This simplifies management by giving IT staff the ability to update devices outside class time, perform remote actions, and even locate a lost device.

#### Scenario: Updates in less time

Bobbi, the head of IT, appreciates how Intune for Education saves him time by enabling him to automatically send settings to each student's device. "I just select 'add' and as soon as the kids turn on their devices and connect them to the Internet, it's as good as done." With Intune for Education, Bobbi can make sure student devices are always up-to-date and configured for the classroom with the latest Microsoft Education-recommended settings and apps.



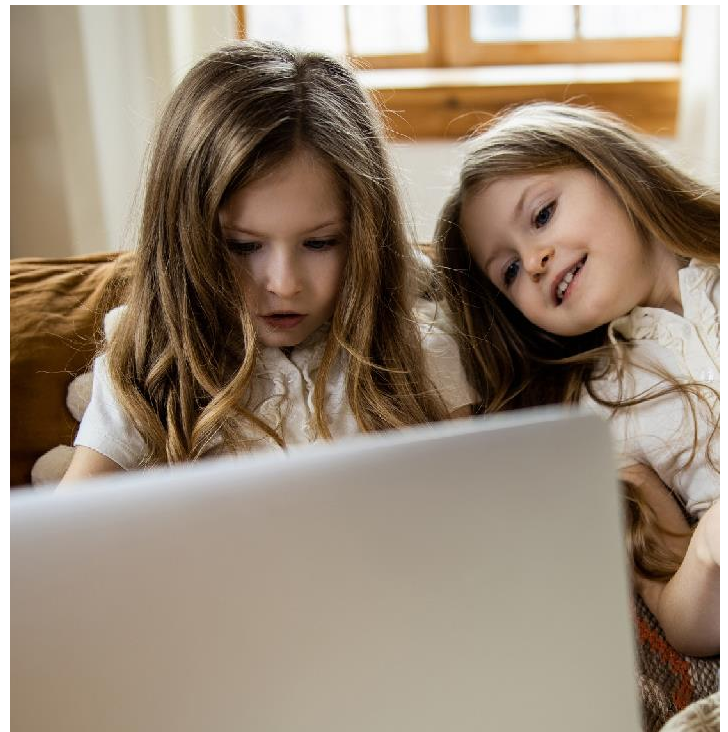


## Chip-to-cloud security

Cybersecurity threats are an increasing risk in today's education landscape. Protecting student privacy, avoiding phishing scams, and other malicious activity at school and online is more important than ever. IT professionals need better ways to manage the risks across the large number of student and educator devices they deploy and maintain. Microsoft builds security into Surface devices from chip to cloud—including built-in firmware protection and remote management tools that help deliver safe, high-quality experiences wherever students are learning.

### Scenario: Exploring new online places safely

Maya and Micah are twins who love playing games online. They each have their favorites but sometimes use Microsoft Edge to search for new games to try. Maya and Micah both know to be wary of ad content, however, they may not always recognize the warning signs of a malicious website. Microsoft Defender SmartScreen lets them know when they have clicked on a link that isn't safe. They can avoid the site and go back to the safety of familiar apps and games like Minecraft Education.\*



## Prioritizing data privacy

As digital spaces continue to expand, students and teachers are spending more time online and it's important to have systems and devices you can trust to handle your data securely, privately, and in compliance with relevant laws and your school's regulations. Surface is designed with businesses, government, and schools in mind, and equipped with built-in safety features, privacy policies, and anti-virus software.



# Reimagining education together

Education systems, educators, and students have experienced a lot in the past three years. The lessons learned from that time have highlighted the need for education technology to support three key requirements—to have an inclusive design, be secure and scalable for IT, and deliver more value to advance learning.

Microsoft meets these challenges with Surface as part of a complete ecosystem of technology solutions that can help unlock the potential of every learner—no matter where they are or what their learning challenges may be.

## Microsoft solutions for education

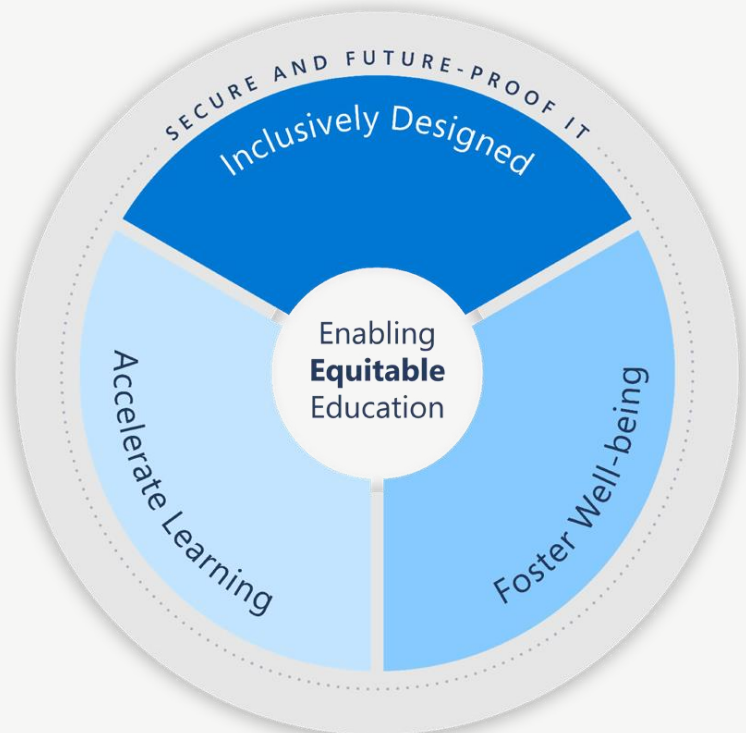
The Microsoft Surface ecosystem provides one comprehensive solution that promotes diversity inclusion, with a commitment to expand accessibility for all and provide security and enhanced value to educators, administrators, and students.



Inclusive design

Secure and scalable IT

More value to  
advance learning



Contact your Surface Specialist or email:  
[USSurfaceEDUHelp@microsoft.com](mailto:USSurfaceEDUHelp@microsoft.com) to learn more about  
how these tools can help you do more with less.

# Sources

<sup>1</sup>Forbes, [The Five Biggest Education and Training Technology Trends in 2022](#), 2022.

<sup>2</sup>ITU, [How many children and young people have internet access at home?](#), 2022.

<sup>3</sup>Houghton Mifflin Harcourt, [7th Annual Educator Confidence Report](#), 2021.

<sup>4</sup>Infrastructure, [The State of Teaching and Learning in K-12 Education](#), 2022.

<sup>5</sup>Microsoft, [Keeping students safer with cybersecurity awareness](#), 2022.

<sup>6</sup>EdWeek, [1st Annual Merrimack College Teacher Survey](#), 2022.

<sup>7</sup>Microsoft, [What Educators Have Learned From Remote Learning Prepares Them For The New School Year](#), 2022.

<sup>8</sup>CoSN, [EdTech Leadership Survey Report](#), 2022.

<sup>9</sup>Edsembli, [Top Technology Trends that Will Define Education in 2022 and Beyond](#), 2022.

\*May be sold separately

