

Windows PowerShell: IT Management

WorkshopPLUS

Duration: 3 Days | **Focus Area:** Operations and Monitoring | **Level:** 300

The WorkshopPLUS provides attendees with a deeper insights into PowerShell by supporting them with IT Management tasks. Through presentations, white-board discussions, and goal-based labs, this workshop covers various topics that are designed to take the attendee to a level where he can manage IT scenarios within his

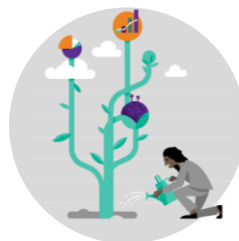
company. Modules are organized by scenario and designed to provide participants with expertise, tools and hands-on experience with Windows PowerShell.

OUTCOMES



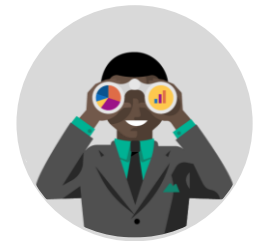
Skills

Gain insights to Windows PowerShell and how to use it.



Best Practices

Learn how the PowerShell syntax works and how to write PowerShell commands.



Way Forward

Take what you've learned in the classroom and apply it to your day to day business.

PREREQUISITES

Participants that have existing experience performing automation tasks will receive the most value from this course.



Recommended Qualifications

- WorkshopPLUS - Windows PowerShell: Foundation Skills
- At least 1 year of experience working with PowerShell code
- Understand basic concepts of managing a computer remotely



Hardware Requirements

- An Intel Core-i5-based PC
- 4 GB RAM
- 128 GB HDD
- Windows 7 SP1 or later
- Internet access with at least 1 Mbps bandwidth per student

AGENDA

Duration: 3 days



SYLLABUS

Working with Remoting and Object Models

- PowerShell Remoting Basics
- Object Models (COM / WMI / CIM)
- PowerShell Remoting Advanced

Regular Expressions, Jobs and Package Management

- Regular Expressions
- Jobs
- Package Management

Security Concepts

- JEA & JIT
- Scope

NEXT STEPS: If you are interested in a WorkshopPLUS for your organization, contact your Microsoft Account Representative.