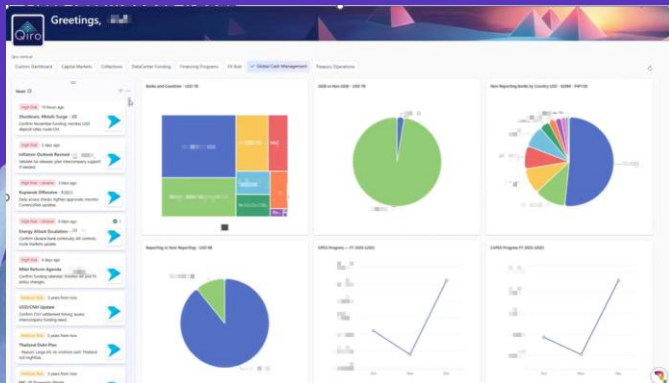


Treasury Intelligence Agent

Solution Overview

AI-powered treasury intelligence solution designed to help corporate treasury teams proactively manage financial risk in a rapidly changing global environment. Key capabilities include:

- Real-time monitoring of external events (market, geopolitical, financial)
- Mapping of events to company-specific financial exposures
- AI-driven insights and recommendations tailored to treasury roles
- Centralized intelligence hub integrating internal and external data sources
- Consistent, scalable framework for risk identification and response



Business Use Case

Corporate treasury teams are facing rising pressure from market volatility, geopolitical uncertainty, and fragmented information spread across internal systems and external sources. Manual information gathering led to duplicated effort, inconsistent risk assessments, and delayed decisions, especially during fast-moving events. Banking failures and geopolitical shocks exposed the limits of reactive treasury processes, making change imperative.

Benefits

- Improved efficiency by eliminating manual monitoring and aggregation
- **Risk Reduction:** Improves consistency in interpreting financial exposure
- **Decision Quality:** Enables faster, data-driven decisions during volatility
- **User Experience:** Role-based insights tailored to treasury stakeholders
- Strategic Impact: Positions treasury as proactive vs reactive

Key Results

8K hours

expected annual time savings
automating manual agent tasks

Technology

- Azure AI
- Azure AI Foundry
- Azure Databases
- Azure Developer Tools
- Azure DevOps
- Azure Web

Time taken

Launched in 3 months