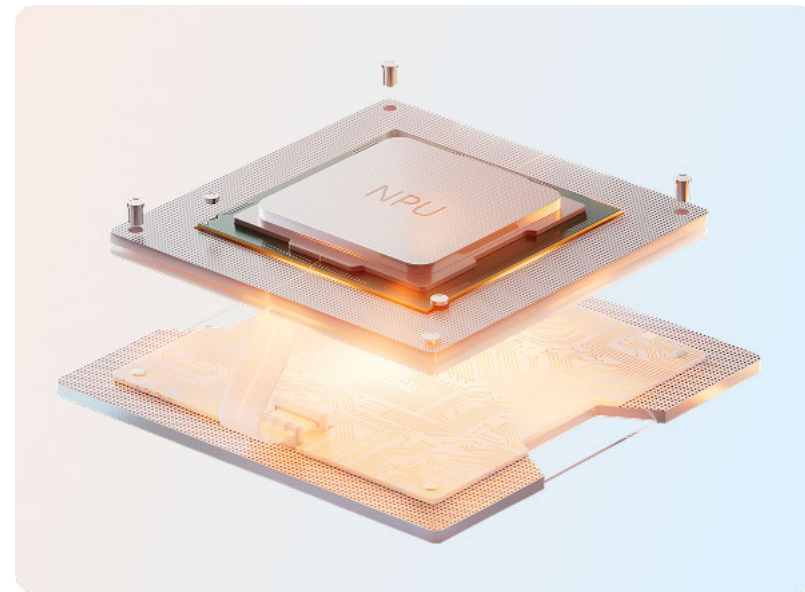


Surface Laptop for Business, 13.8 and 15-inch | Snapdragon

Blazing-fast AI for exceptional workday productivity.

Powered by the latest
Snapdragon® X2 processor



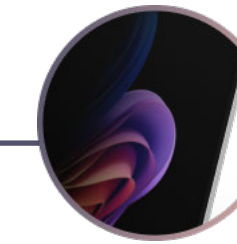
Next-level AI experiences with an 80 TOPS
Qualcomm® Hexagon™ NPU

Slim, durable design in portable
13.8-inch and 15-inch sizes³



Expandable storage via MicroSDXC™
Express card reader on select models

Clearer collaboration with a 1080p
Full HD Surface Studio Camera



Anti-reflective⁶ touchscreen with an
optional integrated privacy screen on
select models⁷



Precision haptic touchpad with
adaptive touch mode

Designed for every workload

Features that help teams stay focused and in flow.

- Individually color-calibrated PixelSense™ Flow display⁴ with adaptive color and contrast, plus Dolby Vision IQ™ support⁵
- Dual Studio Mics with voice focus¹³ and Omnisonic® speakers enhanced by Dolby Atmos®¹⁴
- Dedicated Copilot key³⁵ for fast access to AI-powered productivity tools

Performance that keeps pace

Built to handle demanding, everyday workloads.

- Up to 64 GB LPDDR5x RAM for smooth multitasking
- Up to 20 hours of battery life on select models¹⁰ and fast charging¹⁶ to stay productive
- Reliable wireless performance with Wi-Fi 7¹⁷ and Bluetooth® Core 5.4

Enterprise-ready security

Protection built in across hardware, firmware, and software.

- Secured-core PC with Microsoft Pluton security processor and TPM 2.0
- Windows 11 Pro security features, including BitLocker support
- Fast, passwordless sign-in with Windows Hello and Enhanced Sign-in Security

www.microsoft.com/surface/business

³ Surface display has rounded corners within a standard rectangle. When measured as a standard rectangular shape the screen is 13.8-inch or 15-inch diagonally (actual viewable area is less). ⁴ Optimized for touch interaction only. Pen input and compatibility with Surface Pen, Surface Slim Pen, or similar accessories is not supported. ⁵ Requires Dolby Vision® encoded content and video. ⁶ The Surface Laptop for Business display has been designed to minimize unwanted reflections and has been certified by TÜV SÜD to meet the requirements of ISO 9241-307. ⁷ Available on select 13.8-inch models at additional cost. ⁸ Based on local video playback test. Testing conducted by Microsoft in May 2026 using preproduction software and preproduction Surface Laptop, 13.8-inch (8th Edition) with Snapdragon® X2 Plus 16GB, 512B and Surface Laptop, 15-inch (8th Edition) with Snapdragon® X2 Elite 16GB, 512GB devices. Testing consisted of full battery discharge during video playback of a .mov file through the Windows Media Player application in 1080p at 24 FPS. All settings were default except screen brightness set to 150 nits with auto-brightness disabled. Wi-Fi was connected to a network. Battery life varies significantly with settings, usage, and other factors. ¹³ Voice focus requires activation, requires Windows 11 and is available in apps which use integrated device microphones and use certain Windows audio processing modes. ¹⁴ Requires Dolby Atmos® encoded content/audio. ¹⁶ In select markets, only specific configurations come with Surface Power Supply. Fast charging is supported with minimum 65W Surface Power Supply or minimum 60W USB Type-C® PD charger or higher, sold separately. Testing conducted by Microsoft in February 2026 For details on fast charging see [USB-C® and fast charging for Surface - Microsoft Support](#). ¹⁷ 6GHz band not available in all regions. ³⁵ Copilot key feature availability varies by market, see [key Support](#).

Surface Laptop for Business, 13.8 and 15-inch | Snapdragon

PROCESSOR

- Snapdragon® X2 Plus processor (10 Core)
- Snapdragon® X2 Elite processor (12 Core)

NPU

- Qualcomm® Hexagon™ with 80 TOPS

GRAPHICS

- Qualcomm® Adreno™ GPU

MEMORY AND STORAGE ¹

Memory options:

16GB, 32GB or 64GB LPDDR5x RAM

Storage options:

Removable ² solid-state drive (Gen 4 SSD): 256GB, 512GB, 1TB, 2TB

SCREEN

Surface Laptop for Business, 13.8-inch

- Touchscreen: 13.8-inch ³ PixelSense™ Flow display ⁴
- Resolution: 2304 x 1536 (201 PPI)
- Aspect ratio: 3:2
- Contrast ratio: 1300:1
- Dynamic refresh rate: up to 120Hz
- Color profile:
 - SDR mode: sRGB and Vivid
 - HDR mode: HDR
- Individually color-calibrated display
- Adaptive color
- Adaptive contrast
- Auto color management
- Touch: 10-point multi-touch
- Dolby Vision® IQ support ⁵
- Strengthened glass display
- Choice of display:
 - Anti-reflective, ISO 9241-307 certified ⁶
 - Anti-glare with integrated privacy screen, ISO 9241-307 certified ⁷

- Brightness:
 - SDR: 600 nits maximum (typical)
 - HDR: 600 nits peak luminance ⁸

Surface Laptop for Business, 15-inch

- Touchscreen: 15-inch ³ PixelSense Flow™ display ⁴
- Resolution: 3270 x 2180 (262 PPI)
- Aspect ratio: 3:2
- Contrast ratio: 1300:1
- Dynamic refresh rate: up to 120Hz
- Color profile:
 - SDR mode: sRGB and Vivid
 - HDR mode: HDR
- Individually color-calibrated display
- Adaptive color
- Adaptive contrast
- Auto color management
- Touch: 10-point multi-touch
- Dolby Vision® IQ support ⁵
- Strengthened glass display
- Anti-reflective, ISO 9241-307 certified ⁶
- Brightness:
 - SDR: 600 nits maximum (typical)
 - HDR: 600 nits peak luminance ⁸

SIZE AND WEIGHT ⁹

Surface Laptop for Business, 13.8-inch

- Length: 11.85 inch (301 mm)
- Width: 8.67 inch (220 mm)
- Height: 0.69 inch (17.5 mm)
- Weight: 3.00 lbs (1.36 kg)

Surface Laptop for Business, 15-inch

- Length: 12.96 inch (329 mm)
- Width: 9.41 inch (239 mm)
- Height: 0.72 inch (18.3 mm)
- Weight: 3.67 lbs (1.66 kg)

SIZE AND WEIGHT ⁹ [INDIA ONLY]

Surface Laptop for Business, 13.8-inch

- Length: 30.1 cm
- Width: 22 cm
- Height: 1.75 cm
- Weight: 1.36 kg

Surface Laptop for Business, 15-inch

- Length: 32.9 cm
- Width: 23.9 cm
- Height: 1.83 cm
- Weight: 1.66 kg

BATTERY LIFE

Surface Laptop for Business, 13.8-inch

- Up to 20 hours of local video playback ¹⁰
- Up to 16 hours of active web usage ¹¹

Surface Laptop for Business, 15-inch

- Up to 19 hours of local video playback ¹⁰
- Up to 14 hours of active web usage ¹¹

SECURITY

- Windows 11 Secured-core PC
- Microsoft Pluton security processor
- Enterprise grade security with Pluton TPM 2.0 and BitLocker support
- Windows Hello facial recognition with Enhanced Sign-in Security

CAMERAS

- Full HD front-facing Surface Studio Camera
 - 1080p Full HD camera
- Support for Windows Studio Effects with automatic framing, portrait blur, creative filters (illustrated, animated, watercolor), eye contact, and portrait light
- Windows Hello face authentication camera with Enhanced Sign-in Security

SPEAKERS

- Dual Studio Mics with voice focus ¹³
- Support for Bluetooth® LE Audio
- Omnisonic® speakers with Dolby Atmos® ¹⁴

PORTS

Surface Laptop for Business, 13.8-inch

- 2 x USB-C® / USB4® with support for:
 - Charging
 - Data transfer
 - DisplayPort 1.4 with support for up to three 4K monitors at 60 Hz ¹⁵
 - Surface Thunderbolt™ 4 Dock and other accessories
- Supports fast charging with minimum 60W power supply via Surface Connect or USB-C® ¹⁶
- USB-A 3.2
- 3.5 mm headphone jack
- Surface Connect port

Surface Laptop for Business, 15-inch

- 2 x USB-C® / USB4® with support for:
 - Charging
 - Data transfer
 - DisplayPort 1.4 with support for up to three 4K monitors at 60 Hz ¹⁵
 - Surface Thunderbolt™ 4 Dock and other accessories
- Supports fast charging with minimum 60W power supply via Surface Connect or USB-C® ¹⁶
- USB-A 3.2
- MicroSDXC Express card reader
- 3.5 mm headphone jack
- Surface Connect port

NETWORK AND CONNECTIVITY

- Wi-Fi 7 ¹⁷
- Bluetooth® Core 5.4 technology

SOFTWARE

- Windows 11 Pro
- Preloaded Microsoft 365 Apps ²²
- Microsoft 365 Business Standard, Microsoft 365 Business Premium, or Microsoft 365 Apps 30-day trial ²³

ACCESSIBILITY

- Surface precision haptic touchpad with adaptive touch mode
Compatible with Surface Adaptive Kit ²⁴
- Compatible with Microsoft adaptive accessories ²⁴
- Includes Windows Accessibility Features – Learn More [Accessibility Features | Microsoft Accessibility](#)
- Discover more Microsoft Accessible Devices & Products - [Accessible Devices & Products for PC & Gaming | Assistive Tech Accessories - Microsoft Store](#)

¹ System software uses significant storage space. Available storage is subject to change based on system software updates and apps usage. 1GB = 1 billion bytes. 1TB = 1,000 GB. Surface.com/Storage more details. ² Drive Retention is only available on Microsoft Surface devices in which the Drive is marketed as removable in the technical specifications. Devices returned without a drive may incur a replacement fee unless covered by a Drive Retention benefit (sold separately). Available plans and options may vary by device and region. See [Surface Warranty, Protection Plans & Support – Microsoft Surface for Business](#) for details. ³ Surface display has rounded corners within a standard rectangle. When measured as a standard rectangular shape the screen is 13.8-inch or 15-inch diagonally (actual viewable area is less). ⁴ Optimized for touch interaction only. Pen input and compatibility with Surface Pen, Surface Slim Pen, or similar accessories is not supported. ⁵ Requires Dolby Vision® encoded content and video. ⁶ The Surface Laptop for Business display has been designed to minimize unwanted reflections and has been certified by TÜV SÜD to meet the requirements of ISO 9241-307. ⁷ Available on select 13.8-inch models at additional cost. ⁸ HDR requires HDR content and enabling HDR in device settings. ⁹ Might vary depending on manufacturing processes. ¹⁰ Based on local video playback test. Testing conducted by Microsoft in May 2026 using preproduction software and preproduction Surface Laptop, 13.8-inch (8th Edition) with Snapdragon® X2 Plus 16GB, 512GB and Surface Laptop, 15-inch (8th Edition) with Snapdragon® X2 Elite 16GB, 512GB devices. Testing consisted of full battery discharge during video playback of a .mov file through the Windows Media Player application in 1080p at 24 FPS. All settings were default except screen brightness set to 150 nits with auto-brightness disabled. Wi-Fi was connected to a network. Battery life varies significantly with settings, usage, and other factors. ¹¹ Based on a web browsing test. Testing conducted by Microsoft in May 2026 using preproduction software and preproduction Surface Laptop, 13.8-inch (8th Edition) with Snapdragon® X2 Plus 16GB, 512GB and Surface Laptop, 15-inch (8th Edition) with Snapdragon® X2 Elite 16GB, 512GB devices. Testing consisted of full battery discharge while accessing twelve popular websites over multiple open tabs through the browser. All settings were default except screen brightness set to 150 nits with auto-brightness disabled. Wi-Fi was connected to a network. Battery life varies significantly with settings, usage, and other factors. ¹² Voice focus requires activation, requires Windows 11 and is available in apps which use integrated device microphones and use certain Windows audio processing modes. ¹³ Requires Dolby Atmos® encoded content/audio. ¹⁴ External monitor support requires compatible displays, cables, and accessories. See Surface [tested peripherals page](#) for compatibility information. ¹⁵ In select markets, only specific configurations come with Surface Power Supply. Fast charging is supported with minimum 65W Surface Power Supply or minimum 60W USB Type-C® PD charger or higher, sold separately. Testing conducted by Microsoft in February 2026 For details on fast charging see [USB-C® and fast charging for Surface - Microsoft Support](#). ¹⁶ 6GHz band not available in all regions. ¹⁷ Sold separately. Software license required for some features. ¹⁸ Activation required. If your device is managed by your organization's IT department, contact your IT administrator for activation. After 30 days, you will be charged the applicable monthly or annual subscription fee. Credit card required. Cancel any time to stop future charges. See <https://aka.ms/m365businesstrialinfo>. ²⁴ Sold separately.

Surface Laptop for Business, 13.8 and 15-inch | Snapdragon

SUSTAINABILITY

Surface Laptop for Business, 13.8-inch is designed with sustainability in mind

Surface Laptop for Business, 15-inch is designed with sustainability in mind

Recycled materials

- 64% recycled content in the enclosure, including 100% recycled aluminum alloy and 100% recycled rare earth metals in the magnets ²⁵
- Battery cell contains 100% recycled cobalt ²⁶
- 100% recycled tin contained in solder paste ²⁷
- 100% recycled gold on the motherboard ²⁷
- 100% recycled copper in the motherboard ²⁷

Thoughtful packaging

- 78% recycled content in wood-based fiber packaging ³⁰
- Paper-based, minimizing plastic use
- 100% of our virgin paper sourced comes from responsibly managed forests

Energy efficient

- Coming soon

Repairability

- Clear visual icons and built-in access to repair instructions ^{32, 33}

Surface Trade-in

We make trade-in convenient and secure for our commercial customers in the USA at [Microsoft Trade-in Program](#)

In January 2020, Microsoft committed to be carbon negative, water positive, and achieve zero waste by 2030. Learn more about how we design with sustainability in mind at [Microsoft Surface Sustainability](#)

SERVICEABILITY

Replacement components include: ³³

- Display assembly (including camera)
- Keyboard assembly
- Touchpad
- Removable solid-state drive
- Battery
- Motherboard module (including main processor and main memory)
- Surface Connect
- Headphone jack
- MicroSDXC Express card reader (15-inch)
- Speakers
- Enclosure (bucket)
- Feet
- Fan
- Screw kit
- Collateral kit

EXTERIOR

- Casing: Anodized aluminum
- Colors: Platinum, Black ³⁴

SENSOR

Ambient color sensor

WHAT'S IN THE BOX

Surface Laptop for Business, 13.8-inch

- Surface Laptop for Business, 13.8-inch
- 39W Power Supply with Surface Connect (In select markets, available only with specific configurations)
- Quick Start Guide
- Safety and warranty documents

Surface Laptop for Business, 15-inch

- Surface Laptop for Business, 15-inch
- 65W Power Supply with Surface Connect (In select markets, available only with specific configurations)
- Quick Start Guide
- Safety and warranty documents

KEYBOARD LAYOUT

Surface Laptop for Business, 13.8-inch

- Activation: Moving (mechanical) keys
- Layout: QWERTY, full row of function keys (F1 – F12)
- Windows key and dedicated buttons for media controls, screen brightness
- Automatic keyboard backlight
- Copilot key ³⁵
- Precision haptic touchpad
- Privacy screen key ⁷

Surface Laptop for Business, 15-inch

- Activation: Moving (mechanical) keys
- Layout: QWERTY, full row of function keys (F1 – F12)
- Windows key and dedicated buttons for media controls, screen brightness

- Automatic keyboard backlight
- Copilot key ³⁵
- Precision haptic touchpad

WARRANTY ³⁶

1-year limited hardware warranty

HARDWARE ENVIRONMENTAL TESTING

Coming soon

BATTERY CAPACITIES ⁹

None

ENERGY USAGE [JAPAN ONLY]

Surface Laptop for Business, 13.8-inch

12 区分 9.86 kWh/年 AAA

Surface Laptop for Business, 15-inch

12 区分 12.89 kWh/年 AAA

RADIO FREQUENCY [FRANCE ONLY] ³⁸

Surface Laptop for Business, 13.8-inch

Le débit d'absorption spécifique (DAS) local quantifie l'exposition de l'utilisateur aux ondes électromagnétiques de l'équipement concerné. Le DAS maximal autorisé est de 1.25 W/kg pour le tronc et de 1.25 W/kg pour les membres.

Surface Laptop for Business, 15-inch

Le débit d'absorption spécifique (DAS) local quantifie l'exposition de l'utilisateur aux ondes électromagnétiques de l'équipement concerné. Le DAS maximal autorisé est de 0.51 W/kg pour le tronc et de 0.51 W/kg pour les membres.

FRENCH REPAIRABILITY INDEX [FRANCE ONLY]

[Découvrez comment l'indice de réparabilité est calculé](#)

ENERGY EFFICIENCY [KOREA ONLY]

제품은 에너지소비효율등급 중 최저소비효율기준을 만족합니다.

OPTIONAL ACCESSORIES

Surface Arc Mouse

Surface 45W USB-C Wall Charger ³⁹

Microsoft Surface 65W Power Supply

Surface USB4 Dock

⁷ Available on select 13.8-inch models at additional cost. ⁹ Might vary depending on manufacturing processes. ²⁵ Enclosure includes A Cover and C Bucket. 64% recycled aluminum alloy in A Cover and C Bucket. 100% recycled rare earth metals in magnets. Based on validation performed by Underwriters Laboratories, Inc. using Environmental Claim Validation Procedure (ECVP) for Recycled Content, dated June, 2024. ²⁶ Device (excluding power supply), contains a minimum of 1.5 % recycled cobalt, consisting of 100% recycled cobalt in the battery cell. Based on validation performed by Underwriters Laboratories, Inc. using Environmental Claim Validation Procedure (ECVP) for Recycled Content, UL EVCP-2809-2, Second Edition, dated June, 2024. Recycled Content is defined in accordance with ISO 14021. ²⁷ Device (excluding power supply), contains a minimum of 1.7% recycled content, consisting of 100% recycled rare earth metals in magnets, 100% recycled tin in solder, 100% recycled copper and 100% recycled gold in the motherboard. Based on validation performed by Underwriters Laboratories, Inc. using Environmental Claim Validation Procedure (ECVP) for Recycled Content, UL EVCP-2809-2, Second Edition, dated June, 2024. Recycled Content is defined in accordance with ISO 14021. ³³ Replacement components available through Surface Commercial authorized device resellers. Components can be replaced on-site by a skilled technician following Microsoft's Service Guide. Microsoft tools (sold separately) may also be required. Availability of replacement components and service options may vary by product, market and over time. See [Surface service options - Surface | Microsoft Learn](#). Opening and/or repairing your device can present electric shock, fire and personal injury risks and other hazards. Use caution if undertaking do-it-yourself repairs. Unless required by law, device damage caused during repair will not be covered under Microsoft's Hardware Warranty or protection plans. ³⁴ Colors available on selected models only. Available colors, sizes, finishes, and processors may vary by store, market, and configuration. ³⁵ Copilot key feature availability varies by market, see [key.Support](#). ³⁶ Microsoft's Limited Warranty is in addition to your consumer law rights. ³⁸ Le débit d'absorption spécifique (DAS) local quantifie l'exposition de l'utilisateur aux ondes électromagnétiques de l'équipement concerné. Le DAS maximal autorisé est de 2 W/kg pour la tête et le tronc et de 4 W/kg pour les membres. Consultez cette page pour en savoir plus. ³⁹ Recommended for 13.8-inch.