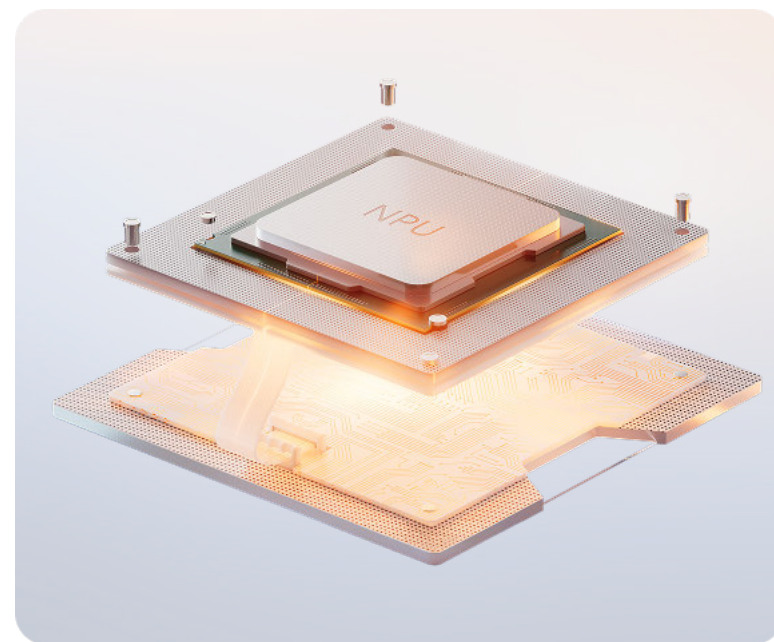


Surface Laptop for Business, 13.8 and 15-inch | Intel

Reliable enterprise performance for maximum Windows productivity.

Powered by the latest Intel® Core™ Ultra processor (Series 3)



A built-in 50 TOPS NPU for fast, efficient AI-driven workloads

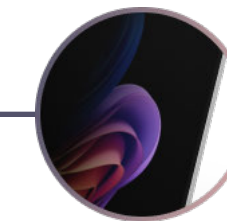
Sleek, thin, and durable design in portable 13.8-inch and 15-inch sizes³



Integrated smart card reader on select models¹⁶ to support secure authentication



Sharper video calls with an AI-enhanced 1080p Surface Studio Camera



Anti-reflective⁶ touchscreen with an optional integrated privacy screen on select models⁷



Precise input with a customizable haptic touchpad designed for all-day use

Designed for productivity

Thoughtful details that make daily tasks feel easier and more focused.

- Brilliant PixelSense™ Flow display⁴ with HDR and Dolby Vision⁵ for smoother scrolling and vivid visuals
- Clear audio in any environment with Dual Studio Mics¹² and Omnisonic® speakers enhanced by Dolby Atmos®¹³
- Quick access to AI experiences with a dedicated Copilot key²⁹

Built to move work forward, faster

Responsive performance for demanding workloads.

- Up to 64 GB of RAM to keep tasks running smoothly
- All-day productivity with up to 23 hours of battery life on select models¹¹ and fast charging¹⁵
- Reliable wireless connections with Wi-Fi 7¹⁷ and Bluetooth® Core 5.4

Security that works seamlessly

Built-in protection across hardware, software, and sign-in.

- Secured-core PC protection with integrated TPM 2.0 and the Microsoft Pluton security processor
- Windows 11 security features, including BitLocker support to help safeguard business data
- Fast, passwordless sign-in with Windows Hello and Enhanced Sign-in Security

www.microsoft.com/surface/business

³ Surface display has rounded corners within a standard rectangle. When measured as a standard rectangular shape the screen is 13.8" or 15" diagonally (actual viewable area is less). ⁴ Optimized for touch interaction only. Pen input and compatibility with Surface Pen, Surface Slim Pen, or similar accessories is not supported. ⁵ Requires Dolby Vision® encoded content and video. ⁶ The Surface Laptop for Business display has been designed to minimize unwanted reflections and has been certified by TÜV SÜD to meet the requirements of ISO 9241-307. ⁷ Available on select 13.8-inch configurations at additional cost. ¹¹ Based on a web browsing test. Testing conducted by Microsoft in April 2026 using preproduction software and preproduction Surface Laptop for Business, 13.8-inch with Intel® Core™ Ultra 5 processor (Series 3), 16GB, 256GB and Surface Laptop for Business, 15-inch with Intel® Core™ Ultra X7 processor (Series 3) 16GB, 256GB devices. Testing consisted of full battery discharge during video playback of a .mov file through the Windows Media Player application in 1080p at 24 FPS. All settings were default except screen brightness set to 150 nits with auto-brightness disabled. Wi-Fi was connected to a network. Battery life varies significantly with settings, usage, and other factors. ¹² Voice focus requires activation, requires Windows 11 and is available in apps which use integrated device microphones and use certain Windows audio processing modes. ¹³ Requires Dolby Atmos® encoded content/audio. ¹⁵ In select markets, only specific configurations come with Surface Power Supply. Fast charging is supported with minimum 65W Surface Power Supply or minimum 60W USB Type-C® PD charger or higher, sold separately. Testing conducted by Microsoft in February 2026. For details on fast charging see [USB-C® and fast charging for Surface - Microsoft Support](#). ¹⁶ Integrated smart card reader available only on Surface Laptop for Business, 15-inch in Platinum and only in selected markets. ¹⁷ 6GHz band not available in all regions. ²⁹ Copilot key feature availability varies by market, see [key Support](#).

Surface Laptop for Business, 13.8 and 15-inch | Intel

PROCESSOR

Surface Laptop for Business, 13.8-inch

- Intel® Core™ Ultra 5 processor 335 (Series 3)
- Intel® Core™ Ultra 7 processor 366H (Series 3)
- Intel® Core™ Ultra X7 processor 368H (Series 3)

Surface Laptop for Business, 15-inch

- Intel® Core™ Ultra 5 processor 335 (Series 3)
- Intel® Core™ Ultra X7 processor 368H (Series 3)

NPU

- Intel® AI Boost with 50 TOPS

GRAPHICS

Surface Laptop for Business, 13.8-inch

- Intel® Core™ Ultra 5 processor (Series 3): Intel® Graphics
- Intel® Core™ Ultra 7 processor (Series 3): Intel® Graphics
- Intel® Core™ Ultra X7 processor (Series 3): Intel® Arc™ Graphics

Surface Laptop for Business, 15-inch

- Intel® Core™ Ultra 5 processor (Series 3): Intel® Graphics
- Intel® Core™ Ultra X7 processor (Series 3): Intel® Arc™ Graphics

MEMORY AND STORAGE ¹

Memory options:

16GB, 32GB or 64GB LPDDR5x RAM

Storage options:

Removable ² solid-state drive (Gen 4) 256GB, 512GB and 1TB

SCREEN

Surface Laptop for Business, 13.8-inch

- Touchscreen: 13.8-inch ³ PixelSense™ Flow display ⁴
- Resolution: 2304 x 1536 (201 PPI)
- Aspect ratio: 3:2
- Contrast ratio: 1300:1
- Dynamic refresh rate: up to 120Hz
- Color profile:
 - SDR mode: sRGB and Vivid

- HDR mode: HDR
- Individually color-calibrated display
- Adaptive color
- Adaptive contrast
- Auto color management
- Touch: 10-point multi-touch
- Dolby Vision IQ™ support ⁵
- Strengthened glass display
- Choice of display options:
 - Anti-reflective, ISO 9241-307 certified ⁶
 - Anti-glare with integrated privacy screen, ISO 9241-307 certified ^{6,7}
- Brightness:
 - SDR: 600 nits maximum (typical)
 - HDR: 600 nits peak luminance ⁸

Surface Laptop for Business, 15-inch

- Touchscreen: 15-inch ³ PixelSense™ Flow display ⁴
- Resolution: 3270 x 2180 (262 PPI)
- Aspect ratio: 3:2
- Contrast ratio: 1300:1
- Dynamic refresh rate: up to 120Hz
- Color profile:
 - SDR mode: sRGB, Vivid
 - HDR mode: HDR
- Individually color-calibrated display
- Adaptive color
- Adaptive contrast
- Auto color management
- Touch: 10-point multi-touch
- Dolby Vision IQ™ support ⁵
- Strengthened glass display
- Anti-reflective, ISO 9241-307 certified ⁶
- Brightness:
 - SDR: 600 nits maximum (typical)
 - HDR: 600 nits peak luminance ⁸

SIZE AND WEIGHT ⁹

Surface Laptop for Business, 13.8-inch

- Length: 11.85 inch (301 mm)

- Width: 8.67 inch (220 mm)
- Height: 0.69 inch (17.5 mm)
- Weight: 2.97 lbs (1.35 kg)
 - With integrated privacy screen: 3.00 lbs (1.36 kg)

Surface Laptop for Business, 15-inch

- Length: 12.96 inch (329 mm)
- Width: 9.41 inch (239 mm)
- Height: 0.72 inch (18.3 mm)
- Weight: 3.67 lbs (1.67 kg)

SIZE AND WEIGHT ⁹ [INDIA ONLY]

Surface Laptop for Business, 13.8-inch

- Length: 30.1 cm
- Width: 22 cm
- Height: 1.75 cm
- Weight: 1.35 kg
 - With integrated privacy screen: 1.36 kg

Surface Laptop for Business, 15-inch

- Length: 32.9 cm
- Width: 23.9 cm
- Height: 1.83 cm
- Weight: 1.67 kg

BATTERY LIFE

Surface Laptop for Business, 13.8-inch

- Up to 23 hours of local video playback ¹⁰
- Up to 14 hours of active web usage ¹¹

Surface Laptop for Business, 15-inch

- Up to 21 hours of local video playback ¹⁰
- Up to 14 hours of active web usage ¹¹

SECURITY

Surface Laptop for Business, 13.8-inch

- Windows 11 Secured-core PC
- Enterprise grade security with integrated TPM 2.0 and BitLocker support
- Microsoft Pluton security processor

- Windows Hello facial recognition with Enhanced Sign-in Security
- Firmware:

- Surface UEFI built with Patina and Project Mu open-source components available through the Open Device Partnership (ODP)
- Firmware built with Secured Embedded Controller project open-source components available through ODP
- Updated through Windows Update

Surface Laptop for Business, 15-inch

- Windows 11 Secured-core PC
- Enterprise grade security with integrated TPM 2.0 and BitLocker support
- Microsoft Pluton security processor
- Windows Hello facial recognition with Enhanced Sign-in Security
- Integrated smart card reader in select configurations and markets
- Firmware:
 - Surface UEFI built with Patina and Project Mu open-source components available through the Open Device Partnership (ODP)
 - Firmware built with Secured Embedded Controller project open-source components available through ODP
 - Updated through Windows Update

CAMERAS

- Full HD front-facing Surface Studio Camera
 - 1080p Full HD camera
- Support for Windows Studio Effects with automatic framing, eye contact, portrait blur and background blur
- Windows Hello face authentication camera with Enhanced Sign-in Security

SPEAKERS

- Dual Studio Mics with voice focus ¹²
- Omnisonic® speakers with Dolby Atmos® ¹³
- Support for Bluetooth® LE Audio

PORTS

Surface Laptop for Business, 13.8-inch

- 2x USB-C® with USB4®/Thunderbolt™ 4 with support for:
 - Charging
 - Data transfer
 - DisplayPort 2.1 with support up to three 4K monitors at 60 Hz ¹⁴
 - Surface Thunderbolt™ 4 Dock and other accessories
- Supports fast charging with minimum 60W charger via Surface Connect or USB-C® ¹⁵
- USB-A 3.2
- 3.5 mm headphone jack
- Surface Connect port

Surface Laptop for Business, 15-inch

- 2x USB-C® with USB4®/Thunderbolt™ 4 with support for:
 - Charging
 - Data transfer
 - DisplayPort 2.1 with support up to three 4K monitors at 60 Hz ¹⁴
 - Surface Thunderbolt™ 4 Dock and other accessories
- Supports fast charging with minimum 60W charger via Surface Connect or USB-C® ¹⁵
- USB-A 3.2
- MicroSDXC Express card reader
- 3.5 mm headphone jack
- Surface Connect port
- Integrated smart card reader (available on select models and markets) ¹⁶

NETWORK AND CONNECTIVITY

- Wi-Fi 7 ¹⁷
- Bluetooth® Core 5.4 technology

SOFTWARE

- Windows 11 Pro
- Preloaded Microsoft 365 Apps ¹⁸
- Microsoft 365 Business Standard, Microsoft 365 Business Premium, or Microsoft 365 Apps 30-day trial ¹⁹

¹ System software uses significant storage space. Available storage is subject to change based on system software updates and apps usage. 1GB = 1 billion bytes. 1TB = 1,000 GB. Surface.com/Storage more details. ² Drive Retention is only available on Microsoft Surface devices in which the Drive is marketed as removable in the technical specifications. Devices returned without a drive may incur a replacement fee unless covered by a Drive Retention benefit (sold separately). Available plans and options may vary by device and region. See [Surface Warranty, Protection Plans & Support – Microsoft Surface for Business](#) for details. ³ Surface display has rounded corners within a standard rectangle. When measured as a standard rectangular shape the screen is 13.8-inch or 15-inch diagonally (actual viewable area is less). ⁴ Optimized for touch interaction only. Pen input and compatibility with Surface Pen, Surface Slim Pen, or similar accessories is not supported. ⁵ Requires Dolby Vision® encoded content and video. ⁶ The Surface Laptop for Business display has been designed to minimize unwanted reflections and has been certified by TÜV SÜD to meet the requirements of ISO 9241-307. ⁷ Available on select 13.8-inch configurations at additional cost. ⁸ HDR requires HDR content and enabling HDR in device settings. ⁹ Might vary depending on manufacturing processes. ¹⁰ Based on local video playback test. Testing conducted by Microsoft in April 2026 using preproduction software and preproduction Surface Laptop for Business, 13.8-inch with Intel® Core™ Ultra 5 processor (Series 3), 16GB, 256GB and Surface Laptop for Business, 15-inch with Intel® Core™ Ultra X7 processor (Series 3), 16GB, 256GB devices. Testing consisted of full battery discharge during video playback of a .mov file through the Windows Media Player application in 1080p at 24 FPS. All settings were default except screen brightness set to 150 nits with auto-brightness disabled. Wi-Fi was connected to a network. Battery life varies significantly with settings, usage, and other factors. ¹¹ Based on a web browsing test. Testing conducted by Microsoft in April 2026 using preproduction software and preproduction Surface Laptop for Business, 13.8-inch with Intel® Core™ Ultra 5 processor (Series 3), 16GB, 256GB and Surface Laptop for Business, 15-inch with Intel® Core™ Ultra X7 processor (Series 3), 16GB, 256GB devices. Testing consisted of full battery discharge during video playback of a .mov file through the Windows Media Player application in 1080p at 24 FPS. All settings were default except screen brightness set to 150 nits with auto-brightness disabled. Wi-Fi was connected to a network. Battery life varies significantly with settings, usage, and other factors. ¹² Voice focus requires activation, requires Windows 11 and is available in apps which use integrated device microphones and use certain Windows audio processing modes. ¹³ Requires Dolby Atmos® encoded content/audio. ¹⁴ External monitor support requires compatible displays, cables, and accessories. See Surface [tested peripherals page](#) for compatibility information. ¹⁵ In select markets, only specific configurations come with Surface Power Supply. Fast charging is supported with minimum 65W Surface Power Supply or minimum 60W USB Type-C® PD charger or higher, sold separately. Testing conducted by Microsoft in February 2026. For details on fast charging see [USB-C® and fast charging for Surface – Microsoft Support](#). ¹⁶ Integrated smart card reader available only on Surface Surface Laptop for Business, 13.8 and 15-inch | Intel in Platinum and only in selected markets. ¹⁷ 6GHz band not available in all regions. ¹⁸ Sold separately. Software license required for some features. ¹⁹ Activation required. If your device is managed by your organization's IT department, contact your IT administrator for activation. After 30 days, you will be charged the applicable monthly or annual subscription fee. Credit card required. Cancel any time to stop future charges. See <https://aka.ms/m365businesstrialinfo>

Surface Laptop for Business, 13.8 and 15-inch | Intel

ACCESSIBILITY

- Surface precision haptic touchpad with adaptive touch mode
- Compatible with Surface Adaptive Kit ²⁰
- Compatible with Microsoft adaptive accessories ²⁰
- Includes Windows Accessibility Features – Learn More [Accessibility Features | Microsoft Accessibility](#)
- Discover more Microsoft Accessible Devices & Products - [Accessible Devices & Products for PC & Gaming | Assistive Tech Accessories - Microsoft Store](#)

SUSTAINABILITY

Surface Laptop for Business, 13.8-inch

Surface Laptop for Business, 13.8-inch is designed with sustainability in mind

Recycled materials

- 64% of the enclosure is made with recycled content, including 100% recycled aluminum alloy and 100% recycled rare earth metals in the magnets ²¹
- Battery cell contains 100% recycled cobalt ²²
- 100% recycled tin contained in solder paste ²³
- 100% recycled gold on the motherboard ²³
- 100% recycled copper on the motherboard ²³

Thoughtful packaging

- 77% recycled content in wood-based fiber in commercial packaging ²⁴
- Paper-based, minimizing plastic use
- 100% of our virgin paper sourced comes from responsibly managed forests ²⁵

Energy efficient

- Coming soon

Repairability

- Clear visual icons and built-in access to repair instructions ²⁷

Surface Trade-in

We make trade-in convenient and secure for our commercial customers in the USA at [Microsoft Trade-in Program](#)

In January 2020, Microsoft committed to be carbon negative, water positive, and achieve zero waste by 2030. Learn more about how we design with sustainability in mind at [Microsoft Surface Sustainability](#)

Surface Laptop for Business, 15-inch

Surface Laptop for Business, 15-inch is designed with sustainability in mind

Recycled materials

- 64% of the enclosure is made with recycled content, including 100% recycled aluminum alloy and 100% recycled rare earth metals in the magnets ²¹
- Battery cell contains 100% recycled cobalt ²²
- 100% recycled tin contained in solder paste ²³
- 100% recycled gold on the motherboard ²³
- 100% recycled copper on the motherboard ²³

Thoughtful packaging

- 77% recycled content in wood-based fiber in commercial packaging ²⁴
- Paper-based, minimizing plastic use
- 100% of our virgin paper sourced comes from responsibly managed forests ²⁵

Energy efficient

- Coming soon

Repairability

- Clear visual icons and built-in access to repair instructions ²⁷

Surface Trade-in

We make trade-in convenient and secure for our commercial customers in the USA at [Microsoft Trade-in Program](#)

In January 2020, Microsoft committed to be carbon negative, water positive, and achieve zero waste by 2030. Learn more about how we design with sustainability in mind at [Microsoft Surface Sustainability](#)

SERVICEABILITY ²⁸

Surface Laptop for Business, 13.8-inch

Replacement components include:

- Display assembly (including camera)
- Keyboard assembly (including touchpad)
- Removable solid-state drive
- Battery
- Motherboard module (including main processor and main memory)
- Surface Connect
- Headphone jack
- Speakers
- Enclosure (bucket)
- Thermal module
- Feet
- Fan
- Screw kit
- Collateral kit

Surface Laptop for Business, 15-inch

Replacement components include:

- Display assembly (including camera)
- Keyboard assembly (including touchpad)
- Removable solid-state drive
- Battery
- Motherboard module (including main processor and main memory)
- Surface Connect
- Headphone jack
- Speakers
- Enclosure (bucket)
- Thermal module
- Feet
- Fan
- Screw kit
- Collateral kit
- MicroSDXC Express card reader (15")

EXTERIOR

Surface Laptop for Business, 13.8-inch

- Casing: Anodized aluminum
- Colors: Platinum and Black ²⁸

Surface Laptop for Business, 15-inch

- Casing: Anodized aluminum
- Colors: Platinum and Black ³¹

SENSOR

- Ambient color sensor

WHAT'S IN THE BOX

Surface Laptop for Business, 13.8-inch

- Surface Laptop for Business, 13.8-inch
- 39W Power Supply with Surface Connect (In select markets, available only with specific configurations)
- Quick Start Guide
- Safety and warranty documents

Surface Laptop for Business, 15-inch

- Surface Laptop for Business, 15-inch
- 65W Power Supply with Surface Connect (In select markets, available only with specific configurations)
- Quick Start Guide
- Safety and warranty documents

KEYBOARD LAYOUT

Surface Laptop for Business, 13.8-inch

- Activation: Moving (mechanical) keys
- Layout: QWERTY, full row of function keys (F1 – F12)
- Windows key and dedicated buttons for media controls, screen brightness
- Automatic Keyboard Backlight
- Copilot key ²⁹
- Privacy screen key ⁷
- Precision haptic touchpad

Surface Laptop for Business, 15-inch

- Activation: Moving (mechanical) keys
- Layout: QWERTY, full row of function keys (F1 – F12)

- Windows key and dedicated buttons for media controls, screen brightness
- Automatic Keyboard Backlight
- Copilot key ²⁹
- Precision haptic touchpad

WARRANTY ³⁰

1-year limited hardware warranty

HARDWARE ENVIRONMENTAL TESTING

Coming soon

BATTERY CAPACITIES ³²

None

ENERGY USAGE [JAPAN ONLY]

Surface Laptop for Business, 13.8-inch

- 構成：12 区分 11.35 kWh/年(AAA)

Surface Laptop for Business, 15-inch

- 構成：12 区分 12.87 kWh/年(AAA)

RADIO FREQUENCY [FRANCE ONLY] ³⁴

Le débit d'absorption spécifique (DAS) local quantifie l'exposition de l'utilisateur aux ondes électromagnétiques de l'équipement concerné. Le DAS maximal autorisé est de 0,61 W/kg pour le tronc et de 0,61 W/kg pour les membres.

FRENCH REPAIRABILITY INDEX [FRANCE ONLY]

[Découvrez comment l'indice de réparabilité est calculé](#)

ENERGY EFFICIENCY [KOREA ONLY]

제품은 에너지소비효율등급 중 최저소비효율기준을 만족합니다.

OPTIONAL ACCESSORIES

- Surface Arc Mouse
- Surface 45W USB-C Wall Charger ³³
- Microsoft Surface 65W Power Supply
- Surface USB4 Dock

²⁰ Sold separately. ²¹ Enclosure includes A Cover and C Bucket. 100% recycled aluminum alloy in A Cover and C Bucket. 100% recycled rare earth metals in magnets. Based on validation performed by Underwriters Laboratories, Inc. using Environmental Claim Validation Procedure (ECVP) for Recycled Content, dated June, 2024. ²² Device (excluding power supply), contains a minimum of 1.4 % recycled cobalt, consisting of 100% recycled cobalt in the battery cell. Based on validation performed by Underwriters Laboratories, Inc. using Environmental Claim Validation Procedure (ECVP) for Recycled Content, UL EVCP-2809-2, Second Edition, dated [Month, year]. Recycled Content is defined in accordance with ISO 14021. ²³ Device (excluding power supply), contains a minimum of 1.7% recycled content, consisting of 100% recycled rare earth metals in magnets, 100% recycled tin in solder, 100% recycled copper and 100% recycled gold in the motherboard. Based on validation performed by Underwriters Laboratories, Inc. using Environmental Claim Validation Procedure (ECVP) for Recycled Content, UL EVCP-2809-2, Second Edition, dated June, 2024. Recycled Content is defined in accordance with ISO 14021. ²⁴ Applies to sales packaging. Based on internal analysis using IEEE Std 1680.1-2018. IEEE Standard for Environmental and Social Responsibility Assessment of Computers and Displays. 4.7.3.1 Required—Recycled content in wood-based fiber packaging. ²⁵ Sources must be Forest Stewardship Council certified. ²⁷ Replacement components available through Surface Commercial authorized device resellers. Components can be replaced on-site by a skilled technician following Microsoft's Service Guide. Microsoft tools (sold separately) may also be required. Availability of replacement components and service options may vary by product, market and over time. See [Surface service options - Surface | Microsoft Learn](#). Opening and/or repairing your device can present electric shock, fire and personal injury risks and other hazards. Use caution if undertaking do-it-yourself repairs. Unless required by law, device damage caused during repair will not be covered under Microsoft's Hardware Warranty or protection plans. ²⁸ Colors available on selected models only. Available colors, sizes, finishes, and processors may vary by store, market, and configuration. ²⁹ Copilot key feature availability varies by market, see [key Support](#). ³⁰ Microsoft's Limited Warranty is in addition to your consumer law rights. ³² Actual rating Nominal (WH) 40.98 and Min (WH) 39.7. ³³ Recommended for 13.8-inch. ³⁴ [FRANCE ONLY] Le débit d'absorption spécifique (DAS) local quantifie l'exposition de l'utilisateur aux ondes électromagnétiques de l'équipement concerné. Le DAS maximal autorisé est de 2 W/kg pour la tête et le tronc et de 4 W/kg pour les membres. Consultez cette page pour en savoir plus.